

# East Texas Orchid Society

"Creating a common bond between orchid enthusiasts in east Texas..."

August 2009, Volume 1, No. 9

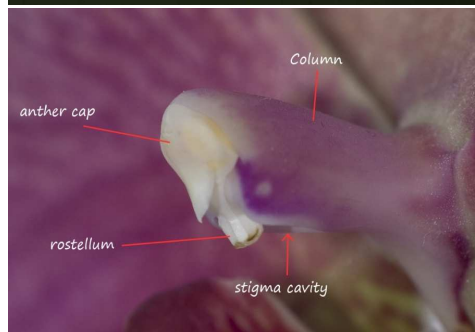
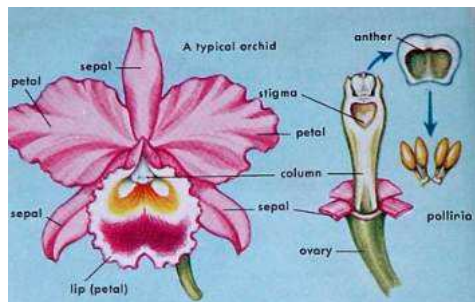


## Just a Few Brief Words

■ **New Members** – East Texas Orchid Society would like to welcome our newest members, Larry from Lufkin and Nancy from San Augustine. We are excited about the steady growth of our group and are especially thrilled that word is getting out to the surrounding areas. I would also like to encourage any visitors to join, and anyone interested to visit. We always have a display table where members can show off their blooms. These are great opportunities to see some weird and wild blooming orchids up close and in person. We also end each meeting with an orchid raffle. At our last meeting, *every* visitor won an orchid!

■ **Staying Connected** – I've enclosed an updated membership roster in order to keep ETOS members in touch with one another. Keeping members in contact will be essential to our mission, "creating a common bond..." While phone calls and email are fine, there are a few other avenues that we can utilize. Orchid-based internet forums, social networking sites, and even photo storage sites provide members other modes of contact. I have set up a "group" for ETOS on flickr.com. It is much more user friendly than uploading to our website, and any ETOS member may submit his or her own photos from home. Check the link on our website.

■ **Planning Ahead** – We have already begun planning for a few events: a potting workshop next month, participating in the Tyler show in spring, and hosting our own show in the fall of 2010. Organizing these events should prove to be challenging but I'm confident we will be successful. Concentrating on founding ETOS, attracting new members, and moving forward with plans for a show has been a huge undertaking and has kept us from focusing on smaller details like refreshments, fundraising, and meeting programs. The details will work themselves out, but many speakers or venues will need to be scheduled early so we will need to think about events well in advance. Jot down a few ideas for speakers, events, and program topics and bring them to the September meeting. Planning now will help ensure a fun and informative 2010 for ETOS. See you September 6<sup>th</sup>!



## How to Mate Without Even Moving.

This illustration shows the typical orientation of orchid reproductive anatomy. The column (gynostemium) is the result of fusion of stamens and the style. At the tip of the column is the anther, which contains the pollinia. Pollinia are like portable packages of pollen and are released (sometimes ejected) all at once onto the pollinator – but only on its way out so as to avoid self-pollination. On the second visit, the pollinia are left on the stigma. The stigma is a shallow pool of sticky jelly-like substance on the underside of the column. The sugar content supports the growth of pollen tubes down into the ovary to make seeds. Some orchids attract their pollinator with food, some trick them with a false food reward. We all know that some orchids are scented and most are colorful, but did you know that some fool bugs into a fight or even an attempt at copulation?

The genus *Coryanthes* has flower parts shaped into a bucket, catching its own dripping nectar. Curious bugs get drenched when they fall into the bucket. Forced to crawl out, the bug brushes past the anther and picks up the pollinia. Some *Bulbophyllum* can lure flies with odors resembling rotting meat. *Angraecum sesquipedale* (see header) attracts a moth with nectar contained in its long spur, elongated to bring the feeding moth in contact with column. It is amazing that with the incredible diversity of orchids around the world, all their different variations are aimed at one thing – pollination.

## Upcoming Events

**8/15:** AOS Judging - Houston Judging Center, 1pm

**8/22:** AOS Judging – Shreveport Judging Cntr., 1pm

**9/6:** ETOS September Meeting, Nacogdoches, TX, 1:30 pm, see [www.EastTexasOrchidSociety.com](http://www.EastTexasOrchidSociety.com) for details.

**9/12:** AOS Judging – Dallas Judging Center, 12:30 pm

**9/19:** ETOS Re-potting Workshop, SFA Mast Arboretum, 1pm

**9/19:** AOS Judging - Houston Judging Center, 1pm

**9/26:** AOS Judging – Shreveport Judging Cntr., 1pm

**10/2-4:** SWROGA Show & Sale, Little Rock, AR

**10/9-11:** Greater North TX Orchid Society Show & Sale, Dallas area, Location TBA.

**11/6-8:** Orchid Society of Jefferson Show & Sale, Clearview Mall, Metairie, LA